



# HALO

lighting solutions

## HALO Portable LED Strip Light

HALO Portable is an evolutionary development of the cutting-edge HALO LED strip lighting 2nd generation series designed and developed to thrive in the harshest conditions on earth and under earth, and will function optimally where most other lighting systems cannot

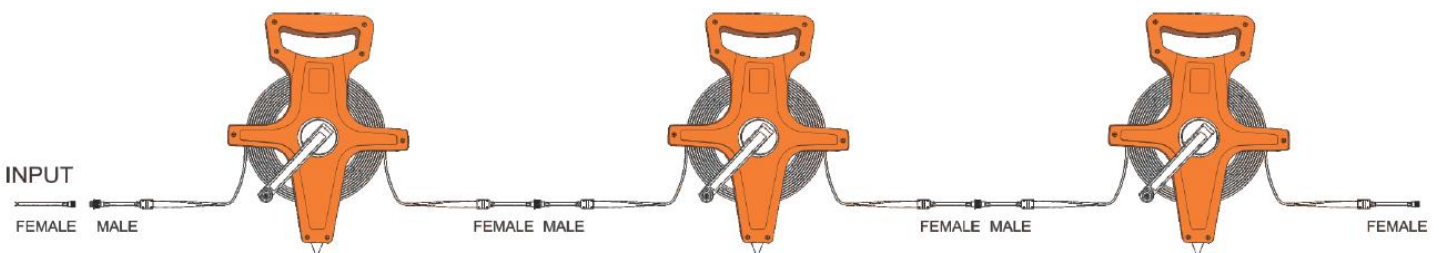
HALO Portable provides a temporary or permanent lighting platform which is unmatched in performance and reliability and technology. It is perfectly suited for all occasions including disaster relief, military operations, construction, workshop, household, social functions and everything in between, distinguishing itself as the most versatile lighting system worldwide.



## HALO Portable - The World's most versatile lighting

The lighting system is directly connected to the electrical supply and there are no external components or equipment needed in the use of HALO portable lighting. All the components required for the functioning of the lighting system is ingeniously built directly into the lighting itself. The lighting is simple to use and easy to install by rolling out the strip and strapping it onto existing infrastructure using HALO Clips or any other relevant method that can be removed afterwards.

Available in 3 different sized portable reels, 2.5M, 5M & 10M, the HALO Portable can be used independently or can be inter-joined with easy using the factory fitted "plug n play" connectors to reach distances of 100m for the 230 VAC system. Other available voltages include 12VDC, (24VDC & 48VDC are available on request) for low voltage applications. HALO Portable provides optimal lighting quickly and easily in areas where conventional lighting cannot. HALO is robust, versatile and easy to maintain.



DISTRIBUTED IN AUSTRALIA BY ILA



1300 056 057

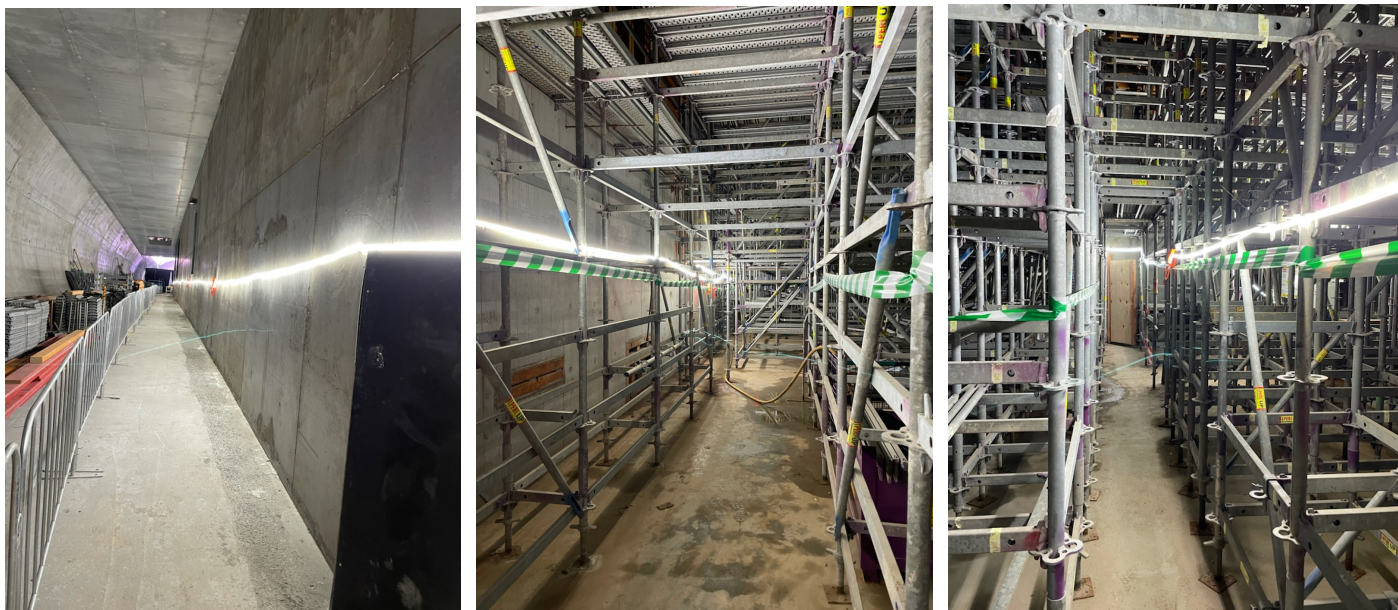


[innovativelighting.com.au](http://innovativelighting.com.au)



[sales@innovativelighting.com.au](mailto:sales@innovativelighting.com.au)

# Applications



# Technical Specification

Model	HALO-Portable-230V	HALO-Portable-12VDC
Description	AC230V constant current	12VDC constant current
LED Make	Epistar SMD 2835	Epistar SMD 2835
LED configuration	128LED's per meter	64 LED's per meter
Range fed from ONE side	100m	5
Reel lengths	2.5M / 5M / 10M	2.5M / 5M
Operating temperature	-40 - +45 °C	-40 - +45 °C
IP Rating strip	68	68
IP Rating connectors	68	68
Power Consumption per Meter	15 W	5.6 W
Colour Rendering Index CRI	> 80	> 80
Colour temperature	5500Kelvin	5500Kelvin
Luminous Efficacy	>95 L/W	>150 L/W
Lumens P/M	>1400	>800
Supply voltage	200-240VAC	12VDC
Light maintenance	20% Drop over 3 years	20% Drop over 3 years
Lifespan	5 Years	5 Years
Warranty Lighting	3 year	3 year
Fire Retardant	Yes	Yes
Outer covering	silicone	silicone
Dimensions	4mm x 14mm	4mm x 14mm
Connectors	Factory fitted	Factory fitted
Tensile strength	+25kg	+25kg
Overvoltage protection	No	No
Overheat protection	Yes	No



**DISTRIBUTED IN AUSTRALIA BY ILA**



1300 056 057



innovativelighting.com.au



sales@innovativelighting.com.au